

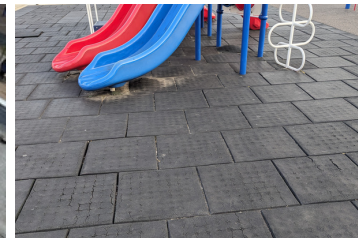


# Albia Community School District **VOTED PPEL** Tuesday, November 7, 2023

## WHY IS A VOTED PPEL NEEDED?

Maintaining school facilities requires expenses that often go beyond what our operating budget can cover alone. **Without a voted PPEL, our district is not equipped to fully fund essential maintenance and facilities costs.** PPEL would generate approximately **\$450,000 annually** to assist with infrastructure projects such as these:

- Roof replacements and repairs at Grant & Lincoln Elementary Schools and the 7th-12th grade building
- District traffic and parking improvements
- Transportation fleet
- Playground facilities
- Heating, ventilation & air conditioning (HVAC)
- 1:1 technology
- Classroom furniture
- Updates to building flooring
- Unforeseen expenses, such as recent foundation issues



## WHAT IS A VOTED PPEL?

A voted **Physical Plant and Equipment Levy (PPEL)** is a voter-approved levy that generates funds a school district can use for infrastructure and equipment repairs, purchases and improvements.

On Tuesday, November 7, 2023, Albia Schools residents will vote on a proposed PPEL for the district. If it's approved, the PPEL will help cover critical school maintenance, transportation, and technology expenses.



Most Iowa schools have had voted PPEL in place for more than a quarter of a century.

## PROPERTY TAX IMPACT

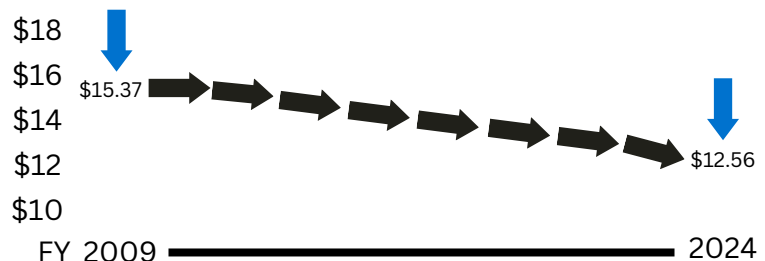
If approved, the PPEL tax rate would be \$1.34, per \$1,000 of taxable property value. It would have a property tax impact of \$88.97/year (\$7.41/month) on a home assessed at \$150,000 in our community.

### SCHOOL DISTRICT TAX RATE COMPARISON (2024)

|              |                |
|--------------|----------------|
| Centerville  | \$16.99        |
| Clarke       | \$16.23        |
| Cardinal     | \$15.64        |
| Ottumwa      | \$14.24        |
| Chariton     | \$14.01        |
| Oskaloosa    | \$12.95        |
| <b>Albia</b> | <b>\$12.56</b> |
| Moravia      | \$12.19        |
| EBF          | \$10.83        |
| Twin Cedars  | \$10.80        |

Source: [Iowa Department of Management](#)

## PROPERTY TAX RATE HISTORY



## WHAT IT IS

The district will use the funds generated through an approved PPEL primarily for the following purposes:



Roof repairs    Transportation    Technology

## WHAT IT'S NOT

- Voted PPEL is not a bond referendum.
- It cannot be used to pay for salaries.
- It will not be used to fund athletics or a turf field.

**LEARN MORE AND TO SEE THE PROPERTY TAX CALCULATOR:**

Scan the QR code or visit [www.AlbiaPPEL.org](http://www.AlbiaPPEL.org)



**JOIN US FOR A PUBLIC MEETING!**

Thursday, October 26, 2023  
6:00PM | Albia High School Library